

International Oriental College

Global Study Center/University for Transcultural Studies in
Health related Science, Practice, Arts and Policies

Inhoud

Part I, MA Level Chinese medicine and sports (teacher/therapist)	4
Our mission is:	4
About Our Program:	5
Program structure	6
Part I: on site studies. The step by step way to traditional Chinese medicine mastership.	8
The renewed IOC Chinese medicine learning plan:	9
Basic Learning rotation schedule (roster IA)	10
Upgrade to accredited university level	11
Services	12
Individual mentoring and Group participation	12
Examination	12
Admission levels	12
Professional involvement and Fasttracks program	12
Post Graduate Support Programs	12
Terms of Completion and Payment	13
Doctorate programs	13
Vocational studies	13
Part II: On line Cultural Health Study program	15
Our mission is:	15
About Our Program:	17
Program structure	19
Overview study organization online program	21
Study method	21
Services	25
Flowchart BA Program	26
Registration Form PROGRAMS ORIENTAL COLLEGE	28

Part I, MA Level Chinese medicine and sports (teacher/therapist)

Our mission is:

- To present an overview of Chinese Medicines and Yangsheng Health Sports / Martial Arts in their intertwined setting of both ancient and modern practices;
- To support methodological training and study to those interested in what the Chinese suggested what the core foundation of their science and culture was, but not to neglect modern developments;
- To connect medicine and sports training back to its roots of personal and moral cultivation;
- To build a community of dedicated sports and medicine people and combine the two where possible to create sound understanding of health and disease;
- To combine all the before and open new pathways for research and scientific exploration

About Our Program:

Our educational program is developed for those:

- Who have an interest in natural and holistic health practices and
- Who want to involve themselves with ancient and modern systems of Chinese Medicines.
- Who realize that healing can only be provided with an in depth knowledge of health, through experiencing and through study
- Who like integrating sports and acupuncture as was traditionally done

Do you recognize yourself in one or more of the above categories? Then read on and see what we can offer to help you with your ideals.

The educational program includes Personal Cultivation, Healthsports, Health Practice, Disease treatment and revalidation, as well as Rejuvenation and Beauty practices in one single system which allows one to work on basic skills as well as intense intellectual or physical involvement levels as one pleases.

The root of our program includes TCM; Chinese Medicine, Wudang Daoist culture of health practice, Gongfu sports, Social Sciences, Bio-medicine studies and History and Culture studies.

As a student you are being made aware of differences in ideology and meaning between your own style of thinking and the inherent ideology of ancient Chinese ideas of health, disease, the body and practice

Following the latest requirements by international educational law we offer study suited to your study pace, agenda and financial background. Every student is treated as an individual and also your program is highly individualized and personalized.

We also offer courses on location, but our on-site campuses move with our chief teachers and dean. Our main campuses are Amsterdam (the Netherlands, full program), Shanghai, Beijing, Wudangshan/Beimashan/Yingshan/Qingchenshan (China),

Those who have already completed a study in one of the Chinese Medicines or Gongfu's are welcome to contact us with regard to the expansion of their knowledge and skills and apply for upgrade in their grades in our BA/MA/PhD program

Program structure

The program BA/MA Chinese medicine and sports we offer is designed to help you achieve your goal within 3 years. Unique is the “Earn as you go” construction, making it possible to start within half year with applying the skills that are learned in a professional setting, thus earning back study fees and gradually start earning a living out of the new profession.

It will also help you with understanding the Chinese view on body and mind, required to become a successful teacher/therapist.

Only dedication and enthusiasm is required, the financial investment being earned back in a short time.

Our program is following United Nations Standards on Chinese medicine education, European directives on academic training and Dutch Educational Law. We keep track of modern developments and allow our students to choose the content and direction of the study field in relationship to what is available. We offer the following programs so that you can enter at any level you feel comfortable with:

- BA/MA studies: in a graduated personalized program we offer practical, theoretical and personal training in combination with developing professional skills. Entry level depends on pre-schooling (see part I). Included is the “earn as you go” structure.
- PhD Studies, to upgrade your university diploma to PhD level. Under mentorship you will start your own research project, leading to a recognised PhD diploma.
- Cultural on line studies, you combine your practical skills from any culture (already acquired or to be acquired) with the theoretical on line studies. Thus you put your knowledge in a scientific setting upgrading it to University standards and recognition. (see Part II)
- Vocational degrees: your experience completed with some additional studies to help you put your experience and insights into the right format, combined with personal mentoring to help you achieve a degree of recognition for your expertise.
- Diplomas: professional training for Clinical Assistant, comparable in level and legally allowed constraints of the average school of Chinese Medicine in Europe and the North America's. These diplomas can also be constructed from combination of:
- Instructor Certificates. Short courses of 3-5 months allow for development of basic skills in Wudang Zhenwu Sports, Aesthetic medicine and Dietics.

Part I: on site studies. The step by step way to traditional Chinese medicine mastership.

Chinese medicine traditionally uses a different moral standard as well as a different outlook on how to study and develop and what the qualities of a health-worker should be. Throughout the program you learn about

Step 1: A doctor should be able to manage his or her on health for a start. This means that this is the first step in your way to mastership. You get the tools to research functions of body and mind, to heal these and to develop a deep insight in the terminology of Chinese medicine and sports in a way that you cannot learn from books, but only from experience. Theory and practice go hand in hand.

Step 2: You start instructing and generating your own income, your skills will improve throughout the program and more and more methods to instruct will be available for you.

Step 3: You will learn massage, to be able to comfort and relax people. This way, while studying yourself, you also study others, resulting in a thorough understanding of the yin, yang, wuxing, jing, qi and shen and all the other Chinese Physiological and anatomical concepts of people and the role of you as a future therapist in treatments. At the same time you start giving instructions in movements and sports, thus being able to observe how people use their bodies and what the effect on their health is. Expand on your income and your work in the field.

Step 4: You will move on to more complex movement methods and gradually start with Neidan practice. The Neidan makes sure that you will be able to give a better treatment, but also that you will realize how the effect on dealing with health affect you and your clients. The secret methods for learning about organs and channel are introduced, making you aware that measuring is not the only and very often not the right way to locate channels and points in others. You learn about food and its influences on health.

Step 5: You start learning acupuncture formula methods and already have the opportunity to start your own practice under guidance of skilled mentors. In this you learn also the “bedside manners” which are appropriate and which should be art of every doctor’s toolkit. After this step you are able to locate every acupuncture-point quickly and precisely and how to handle all the differences in that. You will start your own aesthetic acupuncture clinic.

Step 6: learn in depth diagnostic skills and learn how to deal with health-problems, how to make a treatment plan that is personalized for your client, how and why to use advice on posture and movement in practice and healing. Going through different stages you will observe treatment, slowly be involved in treatments and then start under guidance of mentors to result in your own independent health practice.

Step 7: work in your own practice as teacher/therapist

Step 8: You combine all your knowledge skills and finalize your MA paper, after which you can truly call yourself a Chinese medicine master. You have learned in the traditional way, with knowledge about health, about movement, about your own role and effect in treatment and how to help other people overcome their health-problems.

The renewed IOC Chinese medicine learning plan:

Follow the Wudang style of health. We focus on health to treat disease.

The end result is based on the 4-1 principle of Wudang style of clinical practice:

- One internalized medicine
- One pair of hands
- One needle
- One hand of food ingredients

Acquire the all included IOC Chinese medicine package: theory online at your own speed and discretion, practice in 6 bursts of 3 months under guidance of Shifu You Li Ou, birth name Rene Goris, 15th generation wudang xuanmen pai disciple of Zhangsanfeng, Daotong (3-studies-daoist, including Daoism, Buddhism and Confucianism) and his followers. Study in the Netherlands and China.

1. Learn a disciplinary package of Neidan self-cultivation/qigong/daoyin originating in Shennong god of medicine, alchemical masters Gehong, Taohongjing, Sun Simiao, Zhang Sanfeng, You Xuande and Wudang pai. In this package you find meditation, gongfu, daoyin, taijiquan, fitness, yoga though which you will be able to give classes in minimum 15 health-sports subjects for every age group or cultural background
2. Learn a variety of health boosting beauty and longevity techniques using massage and needles to help establish clinical practice and understand principles of health and supporting production of a long healthy and happy life
3. Learn clinical treatment of a 1000 diseases with formulas and culminating in mastership through single needle treatment in acupuncture according to ancient Daoist secrets of treatment
4. Learn the secrets of food regimen and herbal medicine according to the Wudang method of Li Shizhen and Taohongjing and help people apply them in daily life in support of benefitting good and productive lives
5. Follow 3 year apprenticeship from the third month of your study through a celebrated and ceremonial entering of the ancient brotherhood and sisterhood of dedicated practitioners of Chinese health and medicine workers
6. Start earning money from the end of year one! Pay your study through your results

Basic Learning rotation schedule (roster IA)

	Month 2	Month 3	Month 4 (entry date dependent)	Month 9	Month 10	Month 11 (entry date dependent)
Year 1	Entering Self cultivation , Zhongwujigong I and introduction Instructor meditation	Entering instructor study Wudang fitness I, II and III, self massage	Entering apprenticeship stage 1: how to organize yourself Theory finished: yangsheng health theory	Entering Wudang yoga I, II, taiji 13, gongfu I, self cultivation stage 2 (secret anatomical practices)	Entering TCSM chair massage, body massage, foot massage	Entering apprenticeship stage 2 developing work: starting instructor classes. Theory finished: longevity, beauty and anti-aging
Year 2	Entering Zhongwujigong II, Gongfu II, III, basic needle techniques and anatomy Instructor bamboo formula qigong	Entering basic beauty and rejuvenation treatments	Entering apprenticeship stage 3 To make work beautiful. Theory finished: CM medical health theory, western and Chinese anatomy	Entering wudang taiji 18 and taiyi wuxing, entering facelifting and weight regulation	Entering dermatology and pain treatment, dietary techniques I. entering BA paper writing	Entering apprenticeship stage 4: opening anti-aging clinic. Theory finished: disease theory and teaching theory. BA level accomplished
Year 3	Entering medicine studies and observation clinical practice, zhong wujigong III, wudang taiji 36, taiji sword shortform	Continuation, learning clinical administration, entering dietary techniques II herbal food study I, clinical massage.	Entering apprenticeship stage 5: doing clinical practice. Theory finished: medical acupuncture and tcm acupuncture	Entering one needle practice and conclusion neidan studies, zhong wujigong IV	Continuation, learning self assessment and reporting, brother and sisterhood obligations, entering dietary techniques III herbal food study II	Completing MA level final paper, graduation to MA level professional practitioner Chinese medicine and health work, certification, full professional discipleship. continued learning and mentoring possible and advised according to personalized program
Year 4	Apprenticeship final stage: work as a therapist. Finalizing: receive MA diploma professional master in Neidan, CM health and Beauty practice, disease treatment, Daoland sports instructor and qigong and taijiquan Teacher					
	Optional: MA TCP Chinese medicine counseling and psychology practice					

(Roster II), your start in the professional field and generating income.

	Semester 1	Semester 2	Semester 3	Semester 4
Year 1	See roster 1	Applied Apprenticeship stage 1	See roster 1	Applied Apprenticeship stage 2
Year 2	See roster 1	Applied Apprenticeship stage 3	See roster 1	Applied apprenticeship stage 4
Year 3	See roster 1	Applied apprenticeship stage 5	See roster 1	Applied professional practice

Learning rules:

- I. Maintain your study speed
- II. Do not forget your theory
- III. Every day discipline set by agenda
- IV. Get to work when study tells you to

Upgrade to accredited university level

If you want to upgrade your study to a fully accredited University diploma (we are currently in the process of accreditation), then you can at the same time follow our on line Cultural health-studies. It will give you an in depth knowledge and leaves you free to include the above practice based program in it or any other experience in health or cultural knowledge that you have or are going to get..

Services

Individual mentoring and Group participation

Throughout your program you can depend on advice and help whenever you want it to our mentors, dean and teachers. Our courses are highly individual, but fellow students and teachers are always there to help.

Examination

Depending on the subject examination is either written, practice or oral. At the end of the BA /MA program you are required to write a paper in relation to the subjects you have studied. Of course we will give guidance in helping you to choose a subject for your paper and in throughout the writing. After exam you hear if you have passed or not passed to allow non competitive learning

Admission levels

Everybody can start studying at our school, provided you have a basic knowledge of the English language. For master-levels we require an educational level which is equal to our own BA program. For doctorate level we require a completed Master level Chinese medicine education.

Professional involvement and Fasttracks program

Our program allows for professional involvement during study by means of voluntary job participation. You can early on work as instructor or care provider to earn an income from your study results.

Post Graduate Support Programs

We offer support programs to start a clinic, sports school, aesthetic treatment parlour or combinational centre, as well as setting up professional training programs in the country/city of origin of the student. We combine members and teams in this program to create strong support networks.

Terms of Completion and Payment

The full program takes 3 years and then a finalizing year in which you already work as a teacher/therapist. There are 10 weekends every year (5 weekends every semester). In rare cases we can also schedule in one or more classes on weekdays. For practicing and training together our training rooms are available.

All we ask of you is enthusiasm, determination and 28-30 hours of study and training a week. Study material is in English as are the classes, but Dutch speaking staff is available for your questions.

The rules for payment are on the registration form. Your payment will pay for the full study including an MA-level diploma

We can offer you a loan, with which you can pay for your studies. If you want we will gladly give you more information.

Sign up now, start study tomorrow

Payment options:

- Pay all at once and receive the IOC online university BA transcultural health-science program for free as a bonus (value ...)
- Pay one year forward and take a study loan for the remaining two years (repayable in monthly installments) and receive the IOC online university BA transcultural health-science program as a bonus for only 1000euro more, value: ...)
- Take a study loan, repayable in monthly or yearly installments
- Take a three months trial period for single payment and make a final decision in study month 2

Doctorate programs

A doctorate degree is the highest degree in a field of study of progression. It is required to have a doctorate degree to become a teacher in the field in any academic setting unless where no such title or qualification training is available. The doctor's or professors degree usually requires 3 or more years of work beyond the bachelor's degree and Master degree and an extensive dissertation (lengthy written work based on original research) to validate the quality of your professional and theoretical expertise. It can be done next to professional work. Ph.D. (Doctor of Philosophy) and LL.D. (Doctor of Laws) are 2 examples of doctor's degrees. Our degrees will be called Professor in the expertise field of your choice. (Do not confuse this degree with MD (Doctor of Medicine), which is a first professional degree in medicine). A common doctorate will be a combination of study fields or a particular specialization field of interest in negotiation with the study counsellor appointed for each case.

Vocational studies

Even though our program is written for full time study, *[when we mean full time study, than we mean intense study and not the meagre hours often required by law, but the law as minimum standard. We believe that learning only happens when we make the subject of our learning into our lifestyle, so we*

help people immerse themselves into the subject of their study and its culture. This way we help the student also with her/his personal maybe even spiritual development and maturation as a professional]
all programs can also be partially followed on a open court day to day basis or a selective program to your choices. You choose the time table and the subjects and we help you study!

Partial study can be:

- to deepen your understanding of your profession or life
- recreative learning
- post graduate study
- up-grade study
- to introduce you with a topic
- to improve your health

Part II: On line Cultural Health Study program

Our mission is:

- Developing emancipation of culturally determined scientific models in the widest sense of its meaning
- Contribute to communication on the basis of equality between different cultural models
- Contribute to cultural consciousness of the individual in society
- Contribute to development of self-regulation in healthcare and policy making
- To combine all the before and open new pathways for research and scientific exploration

Culture all pervading

Culture is something that everybody has to do with. All our knowledge systems are rooted in Culture: science, history, psychology, healthcare, physics, religion a.s.o. Very often we do not realize how culturally biased we are in what we do, think and say and how we do, think or say things. It is because of culture we are all different. Culture is like a unique coding that allows a unique perspective on reality and on the world with only a limited group of people allowed to understand with you. It allows for the formation of art, confusion, different technologies to probe reality, different definitions of concepts such as life, death, health, fitness, doing business, governing, being governed, be creative... just to name a few.

To be culturally aware or trained therefore is important; certainly in this modern world where it seems to equalize everything is more convenient than actually study each other's roots. We see that in the differences we prove ourselves truly 'Human'. The lack of appreciation of the differences easily leads to conflicts, aging, and suffering of all classes.

Modern societies and policies emphasize that we are all equal, but equal is not necessarily similar. We sort of look similar, but the apparent similarities of our biology depend very much on the observer. That is how science comes about. All science is opinion, a perspective that only within a context makes sense, and that context is culture.

Correctly learning about science, culture, communication, expression is therefore a major issue in this modern world where we see that cultural identification plays a major role but is hardly addressed in science, policy and law making, economics, education or healthcare.

IOC –Online is the first online learning center where this issue is properly addressed by giving each student access to a comparative cultural learning program that is revolutionary in its approach. What we plan to do with our students is to go back to the drawing board of knowledge and allow innovative concepts of science, healthcare, politics, arts and other aspects of society to develop out of the world and health views of any cultural group in the world that likes to contribute.

How about a sociology based on Mexican Otomi worldview and its consequences in law and education? How about a technology based on sense organs as used in Chinese or Indian yoga and gongfu? How about a healthcare policy that includes acceptance of ghosts as well as a strictly material perspective on medicine? How about a sociology based on Australian family and totem relations? What would be the

benefits, the downfalls? How can these different views contribute to a more humane civil society where every person can find its place of support? That is the tasks we set to our students, if they want to be a (natural) therapist, (health) sports teacher, philosopher, politician, economist, artist, scientist, researcher, journalist and other professions where our studies apply to.

About Our Program:

Our educational program is developed for those who want to develop professionally in fields related to:

- (natural) healthcare and practice
- Personal development, spirituality and other forms of cultural training
- (health) sports and entertainment
- Policy making
- Liberal Arts
- Culture
- Education
- Economics/business
- Science
- Journalism
- Emancipatory issues
- Other directions and interests

What we seek are enthusiastic and determined students from all over the world who want to investigate with us the human condition in professional and personal environments.

Are you willing to be challenged by an education and exercise in observation and analysis and bring with you a fair share of personal input? Do you seek to be master over your own destiny and put your mark on the world in your own unique way? Then please sign up in our program. We need each other to achieve that dream.

The educational program includes categories of study as follows:

BA studies

MA researcher culture and health science

MA research and policy

MA research, healthcare politics and policy building

MA comparative and integrated healthcare and sports

MA Emancipation Natural Healthcare

MA research language culture, health and disease

MA transcultural and environmental east west north south policies

MA social healthcare and self-regulation

MA research and promotion health based knowledge and practice

PhD and post-doctorate studies

The root of our BA program includes

Culture and science	Electives	Practice based imported study	Scientific and cultural knowledge representation
Transcultural science emancipation	Specialization based on preparatory investigation	Practice based (pre) education as preparatory study	Research and expression
Rerorientation on history			BA paper

As a student you are being made aware of differences in ideology and meaning between your own style of thinking and the inherent ideology of ancient and modern cultures, approaches to knowledge, learning and so on in the context of healthcare in the widest sense of its meaning. In every step you are guided and mentored.

Typical of the program we offer is the two different approaches to personalizing your studies:

- 1) By means of the imported study you introduce an aspect in your study that is specifically yours. Together with your mentor you learn to define your introduced study fields/skills in the context of the whole of the study program and by means of self-guided study
- 2) By means of the electives you prepare yourself for future MA or career preferences in the form of self-guided study
- 3) Your mentor offers you meta assignments to help you develop your own personal learning context in preparation for your BA paper

Following the latest requirements by international educational law we offer a study suited to your study pace, agenda and financial background. Every student is treated as an individual and also your program is highly individualized and personalized.

Because the study is primarily based on assignments that can be performed any place in the world every place in the world can be your classroom. Although our study program is primarily academically oriented it wants to invite people to discover culture as a systematic representation of how people view the world and thus derive scientific models for that that can compete in fields with mainstream science in example of for instance Indian and Chinese ancient forms of biology, political theory, studies in history, behaviourism etc. The program also invites you to include cultural norms of expression in representation your research topics next to regular academic representation. It therefore allows you to develop creativity and scientific rigor at the same time.

Program structure

BA-MA-PhD studies: in a graduated personalized program of about 2-6 years we offer academic and personal training in combination in support of developing professional skills.

How you prove your worth?

The comparative mode of expression in study is basically scientific according to regular scientific tools as well as other cultural scientific tools the program has to identify and develop. The mode of expression can be moderated on the basis of cultural models in the form of theatrical, literal, oral or pictorial form as well in so far as appropriate and proving the point.

First steps in your Study protocol:

- 1) As soon as you subscribe and have been accepted as a student you receive your first assignments and mentor contact information. The mentor is your support for content related issues and developments. He or she will help you develop your study plan on the basis of the student passport that has to help you plan and mark your progress.
- 2) You set up a dedicated mail account at our dedicated mail server for receiving and sending study related issues, from there you connect with your mentor and the administration where you will send all your finished assignments and can arrange all your administrative affairs
- 3) As essential part of your study your mentor will help you select PBE study fields you bring into your program as your main personal input. You are invited to draw a plan on how to integrate this in your study. This part can be a scientific or experiential field, a skill or something else you propose in order to prepare you for the MA study that follows after your BA program.

Your study-material and list of suggested readings will be send to you on line with questions and assignments, for an estimated one month of working out these assignments. As soon as you have sent in the answers we will send you the next batch. This way you will gradually evolve a huge amount of knowledge and understandings which serves as the foundation for writing of your BA paper. Your mentor will guide you on the way and offer you meta-assignments partly based on things you experience. These meta-assignments have two main goals:

- Helping you developing overview and ability in your study field
- Helping you achieve excellence in your study field confirm international standards

Entry level

Entry level depends or pre-schooling. For adult studies that have no prior certification a test might be used to ascertain entry level and additional pre-education might be advised prior to entry.

Degrees

The degrees results are part of our Global University research department that investigates and models in joint venture with the students innovative healthcare models for application in the global village.

Exemptions

Exemptions can be made when we have proof of material/previous study knowledge. It is up to the board whether an exemption can be agreed on and it might require an assignment to make credits valid.

Overview study organization online program

Study time

Our program is organized confirm European Union regulations and the educational law of the Netherlands. According to Dutch educational law the student must expect for participation in the following:

BA study is 180 study points (= 5040 study hours) study load. Divided over three years this means that 1 study year is 60 study points (= 1680 study hours) when the BA study is divided over 3 years.

When we count this way you can do 4 modules per year (1 module = 15 study points = 420 hour study load), so the BA study is constructed from 12 separate modules over four categories in three years.

4 Categories of Study subjects

The studies are described through four categories

Culture and science	Electives	Practice based imported study	Scientific and cultural knowledge representation
Transcultural science emancipation	Specialization based on preparatory investigation	Practice based (pre) education as preparatory study	Research and expression
Rerorientation on history			BA paper

Example BA Modular structure:

Year 1: each module 15 points	year 2, each module 15 points	Year 3, each module 15 points
Research and expression I , metastudy	Research and expression II, metastudy	Research and expression III/BA paper
Trans cultural science emancipation I/ (scientific) history	Trans cultural science emancipation II/ history and social sciences in the context of health	Trans cultural science emancipation I/ culture and health sciences
Practice based (pre) education as preparatory study	Practice based (pre) education as preparatory study	Practice based (pre) education as preparatory study
Elective	Elective	Elective
<i>Total 60 points after completion</i>	<i>Total 120 points after completion</i>	<i>Total 180 after completion</i>

Study method

Online learning is still largely in an experimental stage hovering between formal and informal learning and teaching models because of the absence of classroom situations. Through our mentoring system we wish to address natural learning patterns from people's all over the world as taking place in a dialogue. By means of partly preset assignments we formalize certain study directions to conform with needs in

society, culture and science and in respect to other academic institutions. The way how IOC online does this is what is called study method. Formally we can explain our study method as such:

- The IOC-Online Study method is based on a combination of 'assignment based learning' in combination with 'self-regulated study'. As such is combines partial formal- and partial informal study elements. The student is under continuous guiding of mentor/coach/ teacher team that by means of assignments and meta-assignments that coaches the student through the study program and content.
- Assignments are based on a reading list that is offered at the beginning of each school year and that is relevant for that year and includes the reading list of the previous year. Student is at all time allowed to add to that list for personal benefit
- Students offer every semester proofs of progress by means of presentation for which format he or she offers a plan prior to the execution of the presentation so that the mentor/coach can validate it as valid within the program.
- 'Meta Studies' offer assignments that have to combine and recombine study results on the basis of progress through the 'student passport; in which the students study plan is described. Of this product the BA paper is the finalizing result.
- Electives are preparatory studies in for the preferred MA program choice. They set the trend for the direction of your studies as well as your study goals. You develop these in coordination with your mentor. They help you focus on and prepare for your MA studies and professional application
- The IOC offers one standard expertise package as an example of how to bring in your own value package. This part is practice based and is given on site in a variety of locations depending on group sizes over a period of 2 years. This package is the IOC on-site Applied Expertise program Health-counseling Skills, including Chinese acupuncture for anti-aging, beauty and health boosting purposes, Daoland Wudang health-sports, massage, dietics and essentials of Neigong (one package). You can choose this program or any other form of skill or practice based study for the same function.

Distribution study time

De study construction follows a fulltime model and combines this with dual study models. Fulltime refers to the expected study load a student has to work through before he or she can graduate. The dual study model is found in the combination of science and research based studies (3/4th) with practice based courses (1/4th) that the student him- or her-self introduces in the program

Some main study targets:

- BA prepares to enter MA program
- BA combines with practice based studies to offer broader study base and recognition for professional skills or participation
- BA prepares for career seeking in cultural, scientific, political, governmental and other organizational or investigative organizations
- Other targets

Preparatory overview projected MA study programs continuing BA direction and content:

MA researcher culture and health science	
MA research and policy	
MA research, healthcare politics and policy	

building	
MA comparative and integrated healthcare and sports	
MA Emancipation Natural Healthcare	
MA research language culture, health and disease	
MA transcultural and environmental east west north south policies	
MA social healthcare and self-regulation	
MA research and promotion health based knowledge and practice	

Lingua franca:

Administration: Nederlands, English, Chinese

Learning fields: English or Chinese combined with local languages

Staff:

Administration

IT

Coaches/Mentors/Dean

Peer review team

Board

Media

Internet, messenger

e-mail

Skype

Terms of Completing and Payment

Each part of the program (BA, MA and PhD) is when taken as full time study calculated to demand relevant terms of your time. Each module can be followed as component of a partial or a part-time study. Individual Certificates for modules lose their credit validation after 6 years due to content updates. Updates are available at 1/3rd of the module price and may require re-examination.

The average cost per module is per 2011 calculated on € 300-400.

Average BA costs are: € 4200 (excluding imported studies and books or other relevant study materials)

Average MA costs are: € 5400 (excluding books, apprenticeships and other relevant study materials)

Average PhD costs are: € 5000 (excluding books and research costs)

You can pay either in one sum, in two years or in monthly installments (over 2, or exceptionally 3 years but a deposit of three months payment before the start of the studies). No refunds are given.

Cancellation of study can be done three months before the new study year and will give the school the right to not refund your three months advance payment. A module you entered can in no way be refunded.

Services

Individual mentoring and Group participation

Throughout your program you can depend on advice and help whenever you want it to our mentors, dean and teachers. Our courses are highly individual, but fellow students and teachers are always there to help.

This is one of the unique things in our school. You have the freedom to build your own program, go through it in the way you choose, with the mentoring and guiding of teachers and staff.

Examination

Depending on the subject examination is either written, practice or oral. The theory modules contain questions and assignments which require research and the answers also count for 50% towards you exam. The sending in of the answers and minor papers are your main tests on which basis we assess your progress and understanding and form the foundation of your dialogue with your mentor. At the end of the BA- and MA-program you are required to write a paper in relation to the subjects you have studied.

Subject of these papers have to be negotiated with mentor and dean. Names of peer readers will only be offered after agreement is reached on successful graduation. After every assignment conclusion in the form of an intermediate paper based on your assignment answers you hear if you have passed or not passed to allow non competitive learning.

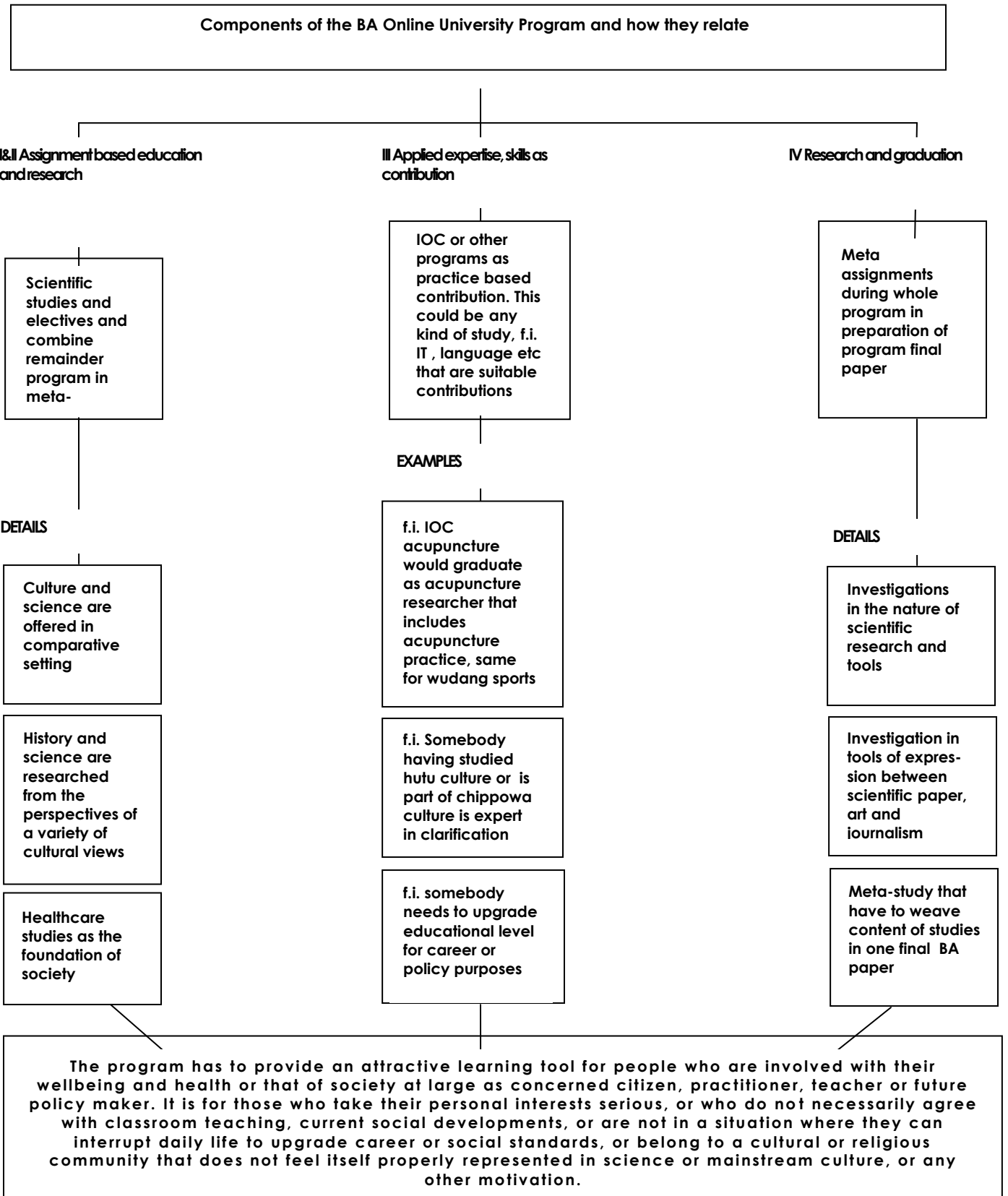
For every module you receive study points to mark your progress. You have to keep point score of your progress through your study passport by yourself. You need to collect your points to be allowed to apply for your final paper procedure and the defence of the paper in front of a panel as well as proof reading by peers whom advice will be binding.

For graduation in any module and the whole program a students has to have completed at least 80% of its program to satisfaction

Post Graduate Support Programs

Once you are graduated we offer support programs to kick-start your career, as well post graduate coaching and training programs. We aim to combine members and teams in this program to create strong support networks.

Flowchart BA Program



Registration Form PROGRAMS ORIENTAL COLLEGE

I subscribe to

- practice and theory Study of Chinese medicine and sports MA level (fill in part A below)
- On line scientific cultural study program BA (fill in part B below)
- On line scientific cultural study program MA (fill in part B below)

DISCLAIMER

I hereby confirm that I agree with the following;

1. I shall not use any knowledge or skills that are related to the specific field of Qigong and/or Qigong theory as taught by the Oriental College either for therapy or for teaching unless I have been authorized by the Oriental College and the Qigong Lineage keeper.
2. I realize that if I don't do as stated under 1. the result will be that I and/or my clients/patients/students will suffer mental, physical or emotional damage. If that is the case it will be my sole responsibility and I agree that I shall not hold the Oriental College, the teachers or the Qigong Lineage keeper responsible or liable.
3. I realize and agree that authorization to teach and/or give therapy can only be given after following a whole program and after I have shown to have obtained the necessary qualities in the view of the Oriental College and the Qigong Lineage keeper. Authorization will be given in writing and will be signed by the managing director of the Oriental College. There is no other way that I can claim authorization.
4. I know and agree that for my license to teach and/or to give therapy, once obtained, I will have to follow postgraduate programs to keep up the necessary qualities.

FINANCIAL AGREEMENT Study of Chinese medicine and sports MA level

We ask for payment in advance. If you cannot afford to pay the whole sum we can offer you a loan which you can pay back in monthly or yearly installments.

- Pay all at once and receive the IOC online university BA transcultural health-science program for free as a bonus (value€ 4200)
- Pay one year forward and take a study loan for the remaining two years (repayable in monthly installments) and receive the IOC online university BA transcultural health-science program as a bonus for only € 1000euro more, a gift with the value: €3200,--
- Take a study loan, repayable in monthly or yearly installments

A. I apply for a loan and wish to repay that in:

- a. 1 year advance payment of €2150,-- and 24 months €195,-- per month, interest and costs included
- b. 3 years – three times €2250,-- , interest and costs included
- c. Monthly payments, entry fee €390,-- followed by 34 months of €195,--
- d. I do not need a loan and will pay the full sum of € 6600,--(whole program) in one time

I would like to study the online course BA Cultural health-studies as well, thus upgrading the value of my Chinese medicine and sports education (included in case of payment in one sum and costs €1000,-- in case of payment in advance of 1 year).

Financial Agreement On line scientific cultural study program

B. I apply for a loan and wish to repay that in:

- a. 1 year advance payment of €2100,-- and 12 months €175,-- per month, (BA) or 1 year advance payment of €2600,-- and 36 months of € 125,--(BA and MA) interest and costs included
- b. For BA and MA 3 years – three times €2100,-- , interest and costs included
- c. Monthly payments, entry fee €400,-- followed by 35 months of €175,-- (BA and MA)
- d. I do not need a loan and will pay the full sum €4200,-- (BA) or €6600,-- (BA and MA)in one time

I agree to pay beforehand (if monthly, before the first of every month starting one month before the start of the studies, if yearly before the start of every year) and I agree that if I do not pay I can be put on study hold until I do and will not have access to study material/classes. Obligation to pay will remain.

Notification of cancellation has to be given in writing three months in advance. Full payment of the sum that is still owed of the loan is then required within the three months notification period. No refund is given.

Name.....
 Address.....
 Town/Zip.....
 Date of Birth.....
 Phonenumber.....
 Passportnumber¹.....
 Date and country of Issue.....
 e-mail address.....
 Telephone.....

 Date.....
 Signature.....

¹ For foreign students